

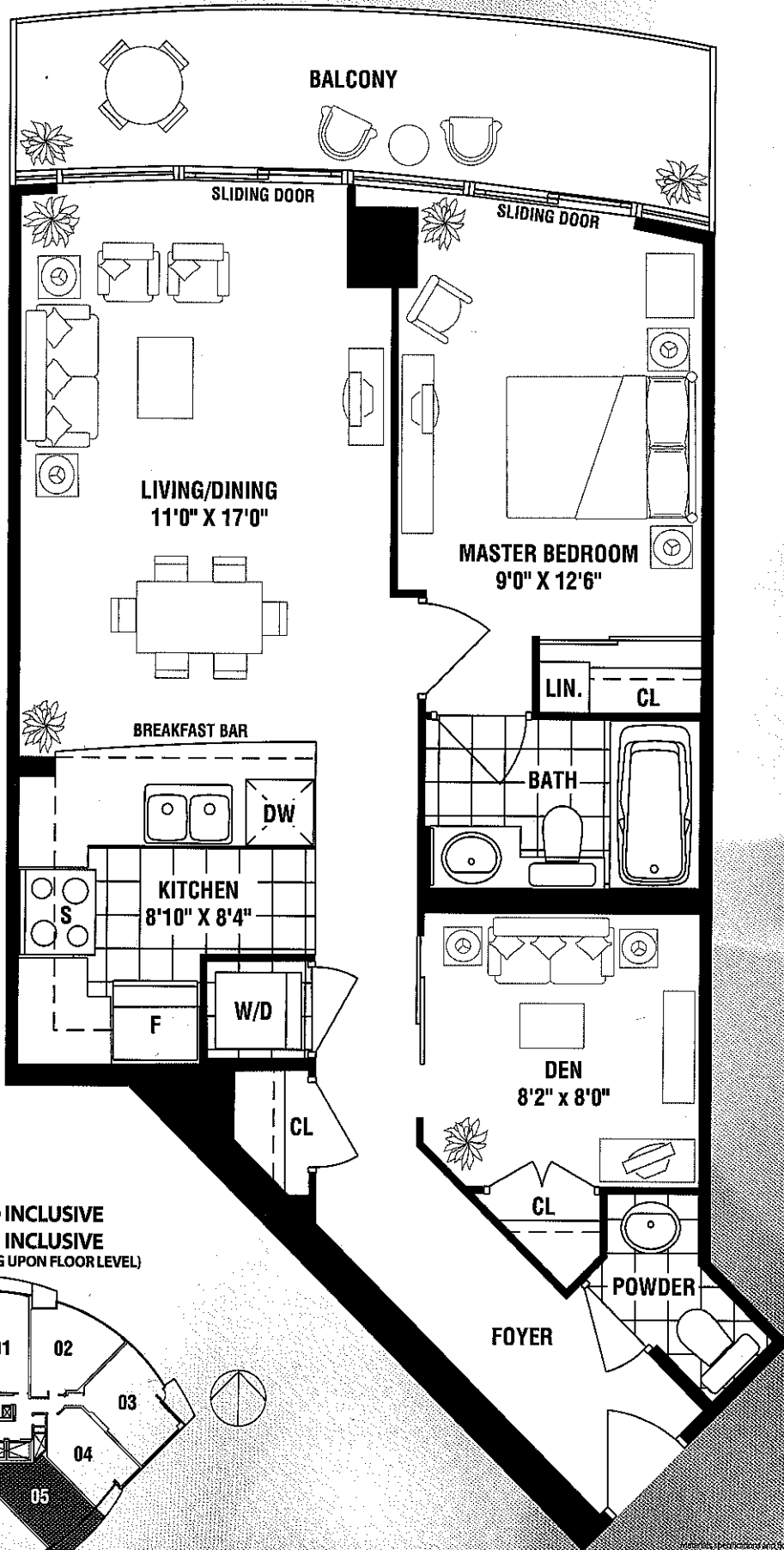
# ABSOLUTE VLSLON

BUILDING THREE: THE CLUB TOWER

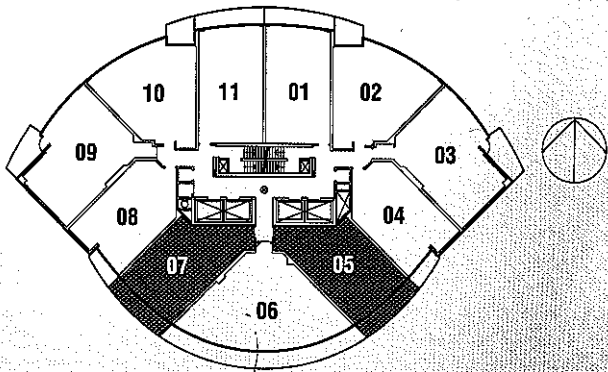
## INTUITION 700 sq. FT.

ONE BEDROOM + DEN

SUITE AREA: 700 SQ. FT. • BALCONY AREA: 102 SQ. FT. • TOTAL AREA: 802 SQ. FT.



05 - FLOORS 3-30 INCLUSIVE  
07 - FLOORS 3-35 INCLUSIVE  
(BALCONY VARIES DEPENDING UPON FLOOR LEVEL)



© 2005 VLSLON. All rights reserved. This is a preliminary floor plan. All dimensions are approximate. All measurements are in feet and inches. All measurements are to the center of the wall unless otherwise noted. All measurements are to the center of the wall unless otherwise noted. All measurements are to the center of the wall unless otherwise noted.