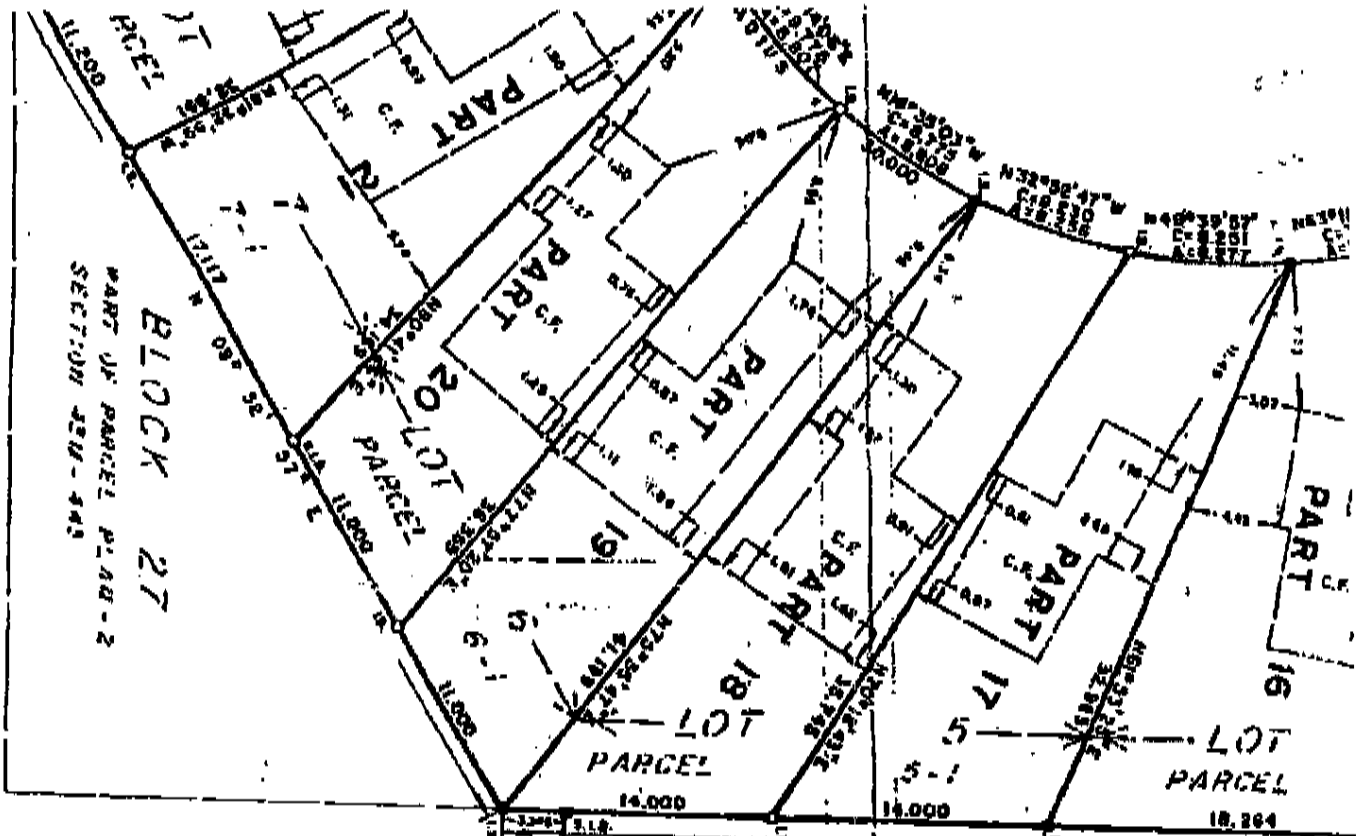


C O P E N H A U S E N

SUBJECT TO EASEMENT IN PWS

K A, PLAN M-51



BLOCK 27  
PART OF PARCEL 250-443  
SECTION 250-443

**SURVEYOR'S CERTIFICATE:**

- 1. THIS SURVEY AND PLAN ARE CORRECT AND IN ACCORDANCE WITH THE SURVEY ACT AND THE LAND TITLES ACT AND THE REGULATIONS MADE THEREUNDER;
- 2. THE SURVEY WAS COMPLETED ON THE 7TH DAY OF JULY, 1983.

RAY J. BATE  
 BATE  
 H. JOHN HENRY  
 OF FARM LAND SURVEYOR

**BEARING NOTE:**

BEARINGS SHOWN HEREON ARE ASTROGNOMIC AND DERIVED FROM THE SOUTHEASTERLY LIMIT OF COWENWAGER ROAD BEING N39°40'27"E IN ACCORDANCE WITH REGISTERED PLAN 4311-443.

**LEGEND:**

- SURVEY MONUMENT FOUND
- SURVEY MONUMENT PLANTED
- STANDARD IRON BAR (0.025 x 0.033 x 1200)
- IRON BAR (0.018 x 0.018 x 600)
- CONCRETE FUNDATION
- SHORT STANDARD IRON BAR (0.025 x 0.025 x 600)
- WITNESS

**NOTE:**

ALL FOUND SURVEY MONUMENTS SHOWN HEREON WERE PLANTED BY KERRIN, MILLER, CARMICHAEL AND BURTON, O.L.S.  
 Reproduction on Lots 18, 19, 22 & 25, added on August 16, 1983.

