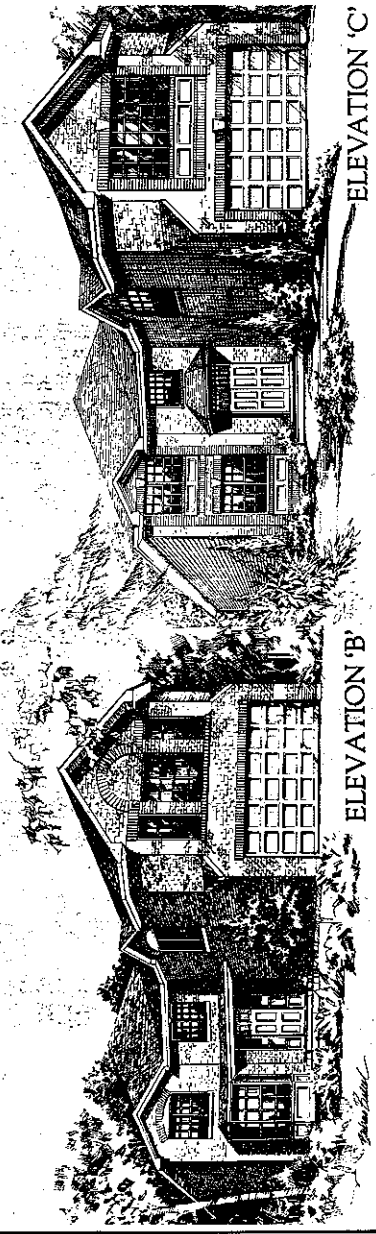


ELEVATION 'A'

Edwin Beall - 1908

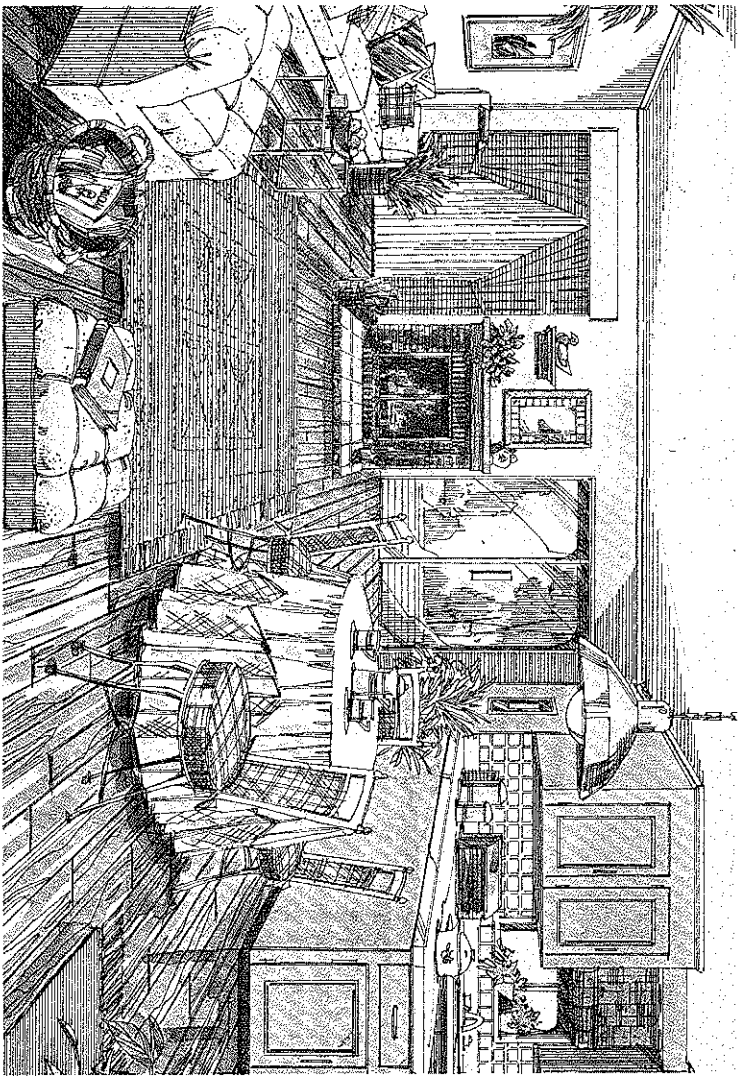
The Roxborough



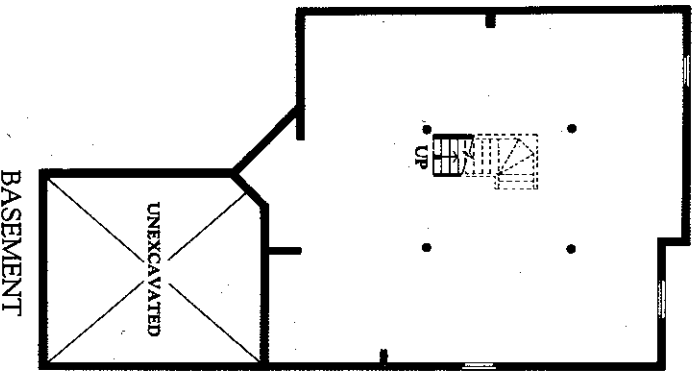
ELEVATION 'A'

ELEVATION 'B'

ELEVATION 'C'



Handwood flooring, a brick fireplace add to the country charm of this family centre.



BASEMENT

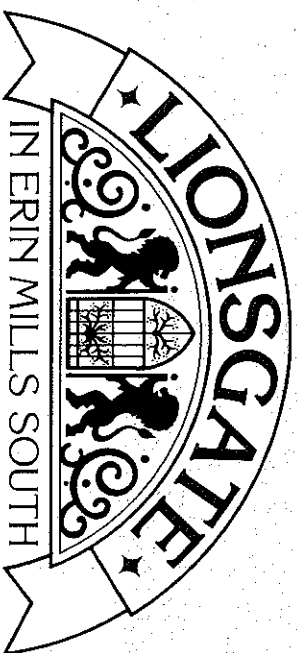
The Roxborough

EMR 35 2,800 SQ. FT.

A thoughtfully engineered floorplan means each room in this home relates to the next for the utmost in living pleasure. A kitchen/breakfast room/ family centre is an outstanding combination of spaciousness and cozy comfort with a fireplace adding the final touch. A laundry room and powder room are located on this floor for step-saving efficiency. The formal dining room and living room become special places for special occasions. Upstairs, this 4 bedroom home features an over-sized master suite including a relaxing sitting area, walk-in closet and luxurious, private ensuite. A raised family retreat with corner fireplace is strategically placed over the garage for quiet family times together.

2,800 Sq. Ft.

ALL MEASUREMENTS ARE APPROXIMATE. PLANS, MATERIALS AND SPECIFICATIONS ARE SUBJECT TO CHANGE. ALL ELEVATIONS ARE ARTIST'S CONCEPT.



The Regal Collection