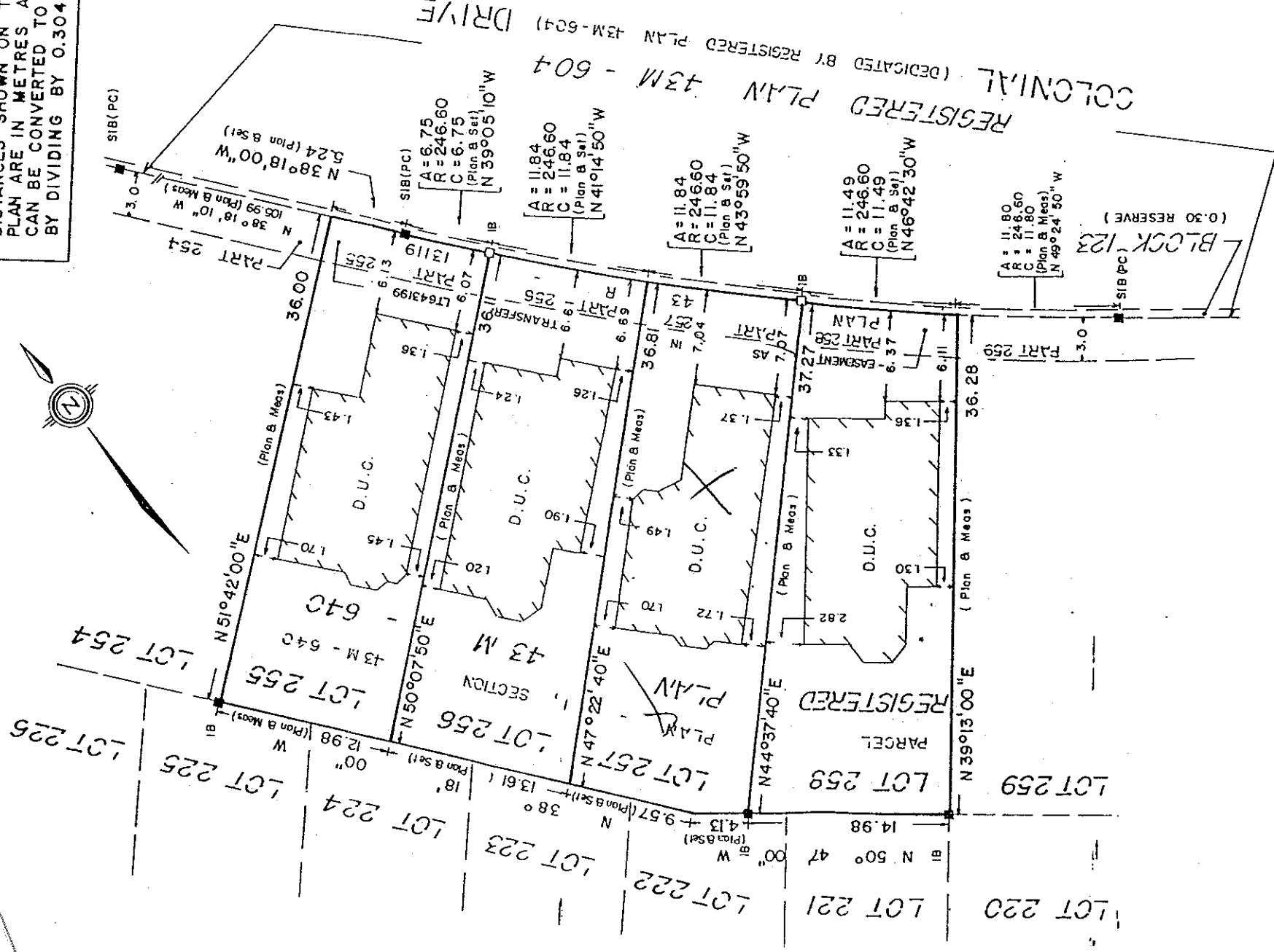
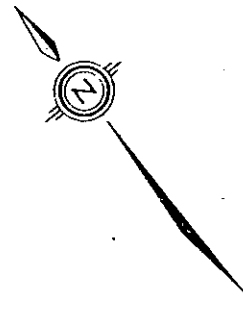


Punching Lot # 257

METRIC

DISTANCES SHOWN ON THIS PLAN ARE IN METRES AND CAN BE CONVERTED TO FEET BY DIVIDING BY 0.3048



BUILDING LOCATION SURVEY OF
LOTS 255, 256, 257 AND 258
REGISTERED PLAN 43M-640
CITY OF MISSISSAUGA
REGIONAL MUNICIPALITY OF PEEL

SCALE 1:400
0m 5 4 2 0

J.D. BARNES LIMITED, Surveyors - 1986

SURVEYOR'S CERTIFICATE

I CERTIFY THAT THE FIELD SURVEY REPRESENTED ON THIS PLAN WAS COMPLETED ON THE 29th DAY OF JULY, 1986.

August 15, 1986
DATE
FRANK J. MAURO
Ontario Land Surveyor

NOTES:
BEARINGS ARE ASTROMOMIC AND ARE REFERRED TO SOUTHWESTERLY LIMIT OF BLOCK 123 AS SHOWN ON REGISTERED PLAN 43 M - 604, HAVING A BEARING OF N 38°18'00" W

- DENOTES SURVEY MONUMENT FOUND
- DENOTES SURVEY MONUMENT PLANTED
- ▣ DENOTES STANDARD IRON BAR
- ▤ DENOTES IRON BAR
- DENOTES POINT OF CURVATURE
- DENOTES REGISTERED PLAN 43 M - 640
- DENOTES DWELLING UNDER CONSTRUCTION

ALL BEAR TIES NOT SHOWN ARE ABOVE THE BY-LAW MINIMUM .
ALL BUILDING TIES ARE TAKEN TO CONCRETE FOUNDATION.
ALL FOUND SURVEY MONUMENTS SET BY MARSHALL MACKLIN MONAGHAN LTD.



J. D. BARNES LIMITED, Surveyors
Cadastral • Geodetic • Photogrammetric • Engineering Surveys
TORONTO BRAMPTON MISSISSAUGA OSHAWA

DRAWN BY: AS

CHECKED BY: *JK*

SCALE: 1:400

REFERENCE NO.:
86-26-017-O-G

REGISTERED PLAN 43M - 604
COLONIAL (DEDICATED BY REGISTERED PLAN 43M-604) DRIVE

BLOCK 123
(0.30 RESERVE)

LOT 254
43M - 640

LOT 255
43M - 640

LOT 256
43M - 640

LOT 257
43M - 640

LOT 258
43M - 640

LOT 259
43M - 640

LOT 225

LOT 224

LOT 223

LOT 222

LOT 221

LOT 220

SIB(PC)

SIB(PC)

SIB(PC)

SIB(PC)

SIB(PC)

A = 6.75
R = 246.60
C = 6.75
(Plan & Set)
N 39°05'10"W

A = 11.84
R = 246.60
C = 11.84
(Plan & Set)
N 41°14'50"W

A = 11.84
R = 246.60
C = 11.49
(Plan & Set)
N 46°42'30"W

A = 11.80
R = 246.60
C = 11.80
(Plan & Meas.)
N 49°24'50"W

A = 11.84
R = 246.60
C = 11.84
(Plan & Set)
N 38°18'00"W

A = 11.84
R = 246.60
C = 11.84
(Plan & Meas.)
N 105°18'10"W

A = 11.84
R = 246.60
C = 11.84
(Plan & Meas.)
N 38°18'10"W

A = 11.84
R = 246.60
C = 11.84
(Plan & Meas.)
N 38°18'10"W

A = 11.84
R = 246.60
C = 11.84
(Plan & Meas.)
N 38°18'10"W

A = 11.84
R = 246.60
C = 11.84
(Plan & Meas.)
N 38°18'10"W

A = 11.84
R = 246.60
C = 11.84
(Plan & Meas.)
N 38°18'10"W

A = 11.84
R = 246.60
C = 11.84
(Plan & Meas.)
N 38°18'10"W

A = 11.84
R = 246.60
C = 11.84
(Plan & Meas.)
N 38°18'10"W

A = 11.84
R = 246.60
C = 11.84
(Plan & Meas.)
N 38°18'10"W

A = 11.84
R = 246.60
C = 11.84
(Plan & Meas.)
N 38°18'10"W

A = 11.84
R = 246.60
C = 11.84
(Plan & Meas.)
N 38°18'10"W

A = 11.84
R = 246.60
C = 11.84
(Plan & Meas.)
N 38°18'10"W